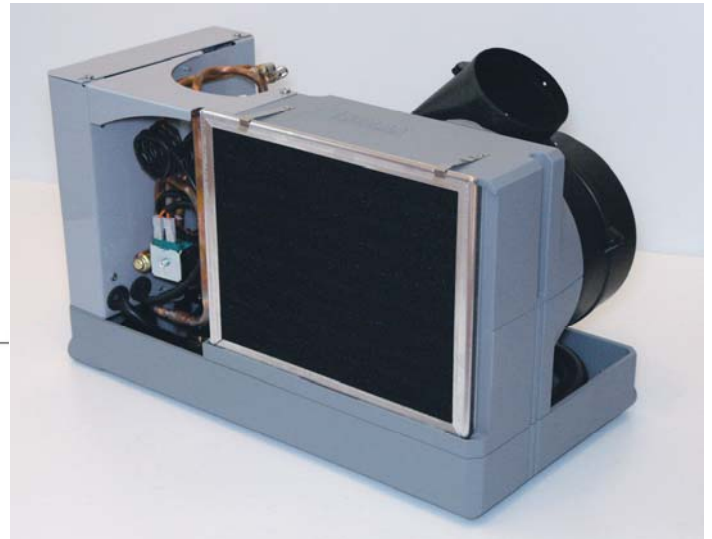
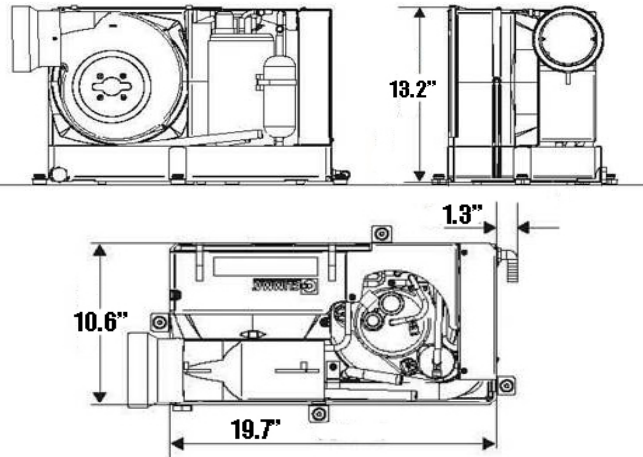
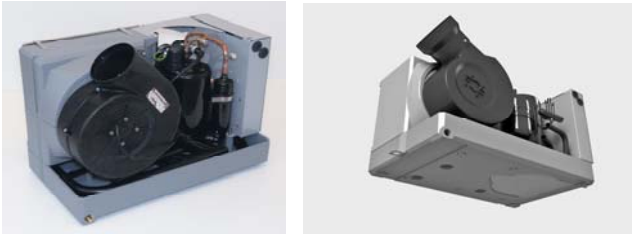


Climma Compact Systems 7 - 10 - 12

(See over for Compact 16 and performance data)



- Unique compact and space-saving design results in unobstructed air flow into unit
- Tough, impact resistant poly-carb base and fan shroud results in strong, durable product
- Built-in vibration dampers incorporated in design for exceptionally low noise levels
- "Scavenger" type condensate drains ensure no water sloshing in drain pan
- Quiet, high efficiency rotary compressors results in low current draw and starting surge
- High heat transfer condensers for exceptional performance in both cool and heat modes
- Raised Lanced Fin evaporators to ensure maximum possible heat and moisture removal
- Quiet but powerful rotateable blowers for high efficiency and flexibility of installation
- Six manual fan speeds, plus Auto, for adaptability to any application
- Uses environmentally friendly "Green Gas" refrigerant, R417a (Iseon 59)
- Reverse cycle heat, for maximum heating performance in Spring and Fall
- Auto, Humidity, and Fan Only modes simply selected on display
- Exceptionally low current draw - Can be powered from batteries through inverter
- Air intake filters remove easily and quickly for routine cleaning

FX 2 Digital Control



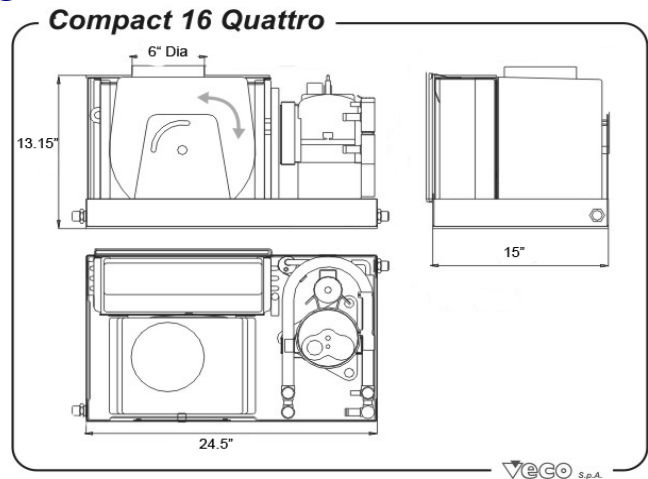
- High contrast organic LED (OLED) display
- Visual symbols for easy viewing of operational status
- Four position joystick with push-on, push off
- Adjustable brightness on display and screen-saver

Imported into North America by:



Annapolis MD USA
301.352.6962 voice
info@veco-na.com
www.veco-na.com

Compact 16 - Reverse Cycle



Technical Data - All Systems

	<u>Compact 7</u>	<u>Compact 10</u>	<u>Compact 12</u>	<u>Compact 16</u>
Supply and Return Air				
Min discharge grille area	50 sq in	60 sq in	70 sq in	80 sq in
Min return-air grille area	80 sq in	100sq in	120 sq in	140 sq in
Duct ring diameter	4"	5"	5"	6"
Blower power (nominal)	270 CFM	330 CFM	400 CFM	530 CFM
Water				
Min cooling water flow rate	1.5 GPM	2.0 GPM	3.0 GPM	3.5 GPM
Recommended pump - 110v	P250	P250	P500	P500
Recommended pump - 12v	Flo-Jet	Johnson	Johnson	Johnson
Hose connection diameter	5/8"	5/8"	5/8"	5/8"
Condensate drain diameter	5/8"	5/8"	5/8"	5/8"
Electrical Requirements				
Circuit breaker @110v	15 amp	20 amp	20 amp	25 amp
Min power supply wire	14 AWG	12 AWG	12 AWG	10 AWG
Capacity - cooling				
Nominal capacity	7,000 Btu	10,000 Btu	12,000 Btu	16,000 Btu
Compressor capacity - ABYC	7,100 Btu	10,000 Btu	12,350 Btu	16,500 Btu
System capacity as tested	6,870 Btu	9,960 Btu	12,050 Btu	16,100 Btu
Cooling capability				
Below decks free air space	500 cu ft	715 cu ft	850 cu ft	1,140 cu ft
Above decks free air space	400 cu ft	590 cu ft	700 cu ft	950 cu ft
Power draw @ 115v 60Hz				
Power, amps, cool (nominal)	4.2	5.8	8.2	9.6
Power, watts, cool (nominal)	490	667	943	1,100
EER, cool (nominal)	14	14.9	12.8	14.6
Weight				
	56 pounds	73 pounds	75 pounds	84 pounds